

CATS

Partners in Progress Meeting

Results for Country Club Hills Illinois

December, 2004



Chicago Area Transportation Study
300 West Adams
Chicago, IL 60606
(312) 793-3460
www.catsmpo.com

Public Outreach Report

City of Country Club Hills

Prepared by: LynnToi Lawson
December, 2004

On October 21, 2004, the Chicago Area Transportation Study presented its seventh "Partners in Progress" community outreach luncheon at the Country Club Hills Municipal Building, 4200 Main St.

CATS hosted this meeting to inform, educate and involve local officials, businesses and other stakeholders in the transportation planning process. Mrs. Henrietta Turner, city manager of Country Club Hills, said having CATS kick off their three-day strategic planning meeting served as a valuable tool in educating local participants on the nuts and bolts of the transportation planning process, fostering an understanding of the process and invoking questions designed to guide and strengthen local planning efforts.

Keynote speakers at the meeting included Patricia Berry, CATS director of Plan Implementation; Gordon Smith, metropolitan planning manager for the Illinois Department of Transportation, who spoke about the CREATE Program; Marcus Arnold, planning liaison for the South Suburban Mayors and Managers Association; and Virgil Giles, a representative of the Governmental Affairs Office of Pace.

CATS would like to extend a special note of thanks to Henrietta Turner and her staff for their dedication and commitment to improving the quality of life for the residents of Country Club Hills.

Each meeting participant was asked to complete a brief Transportation Opinion Survey designed to identify their transportation concerns and issues. We received completed surveys from approximately 20 participants. We also received questions via e-mail from meeting participants after the meeting.

The primary areas of concern were as follows:

- 183rd Street interchange at Interstate 57 in Country Club Hills
- Metra Electric – Randolph Street Station; frequency of service; new stations; washrooms on-board trains
- I-80/94 – Completion of construction on Interstates 80 and 94.

It is our intent to provide each community we visit with this survey to better understand transportation strengths, weaknesses and needs from a local perspective. Survey results can be found on the following pages.





Country Club Hills Transportation Opinion Survey Results

The following conclusions are to be regarded as general in nature. The results are not a product of rigorous quantitative or qualitative analysis. In several instances, the survey offered multiple options for answers, and as expected most respondents chose more than one option. Therefore, the responses to some questions add up to more than 100 percent.

The number of people who completed the Transportation Opinion Survey in Country Club Hills was 19: 12 males and 7 females. The average age of the respondents was 56, with the oldest being 79 and the youngest 35.

The primary means of transportation for 95 percent of the respondents is driving an auto/van/pickup/SUV. Forty-seven percent said they also travel as passengers in autos/vans/pickups/SUVs. Forty-seven percent said they use Metra, 21 percent ride CTA, Pace or Paratransit buses, 11 percent ride the El, and 16 percent use taxis. The survey also showed that 21 percent ride bicycles and 42 percent walk to their destinations.

Traffic congestion was cited by 68 percent of the respondents as their most significant traffic problem, followed by poor road conditions (53%) and railroad crossing delays (42%). Intersection delays (32%) and inadequate or lack of signage (16%) were reported as secondary problems.



With regard to transit problems, lack of service where respondents live (58%) and where they need to travel (47%) were cited by most of the respondents. Twenty-one percent said transit service is too infrequent, 16% said it's too slow, and 10% stated that service is either too expensive or unsafe. Sixteen percent of the respondents reported having no information about available transit services.

Television (58%), radio (53%) and newspapers (32%) were reported as the primary means of obtaining transportation information for most respondents. Information provided by the Internet (21%), and CTA, Metra and Pace (16%) was indicated as secondary means, and more than a fourth (26%) indicated they had no means of obtaining transportation information.



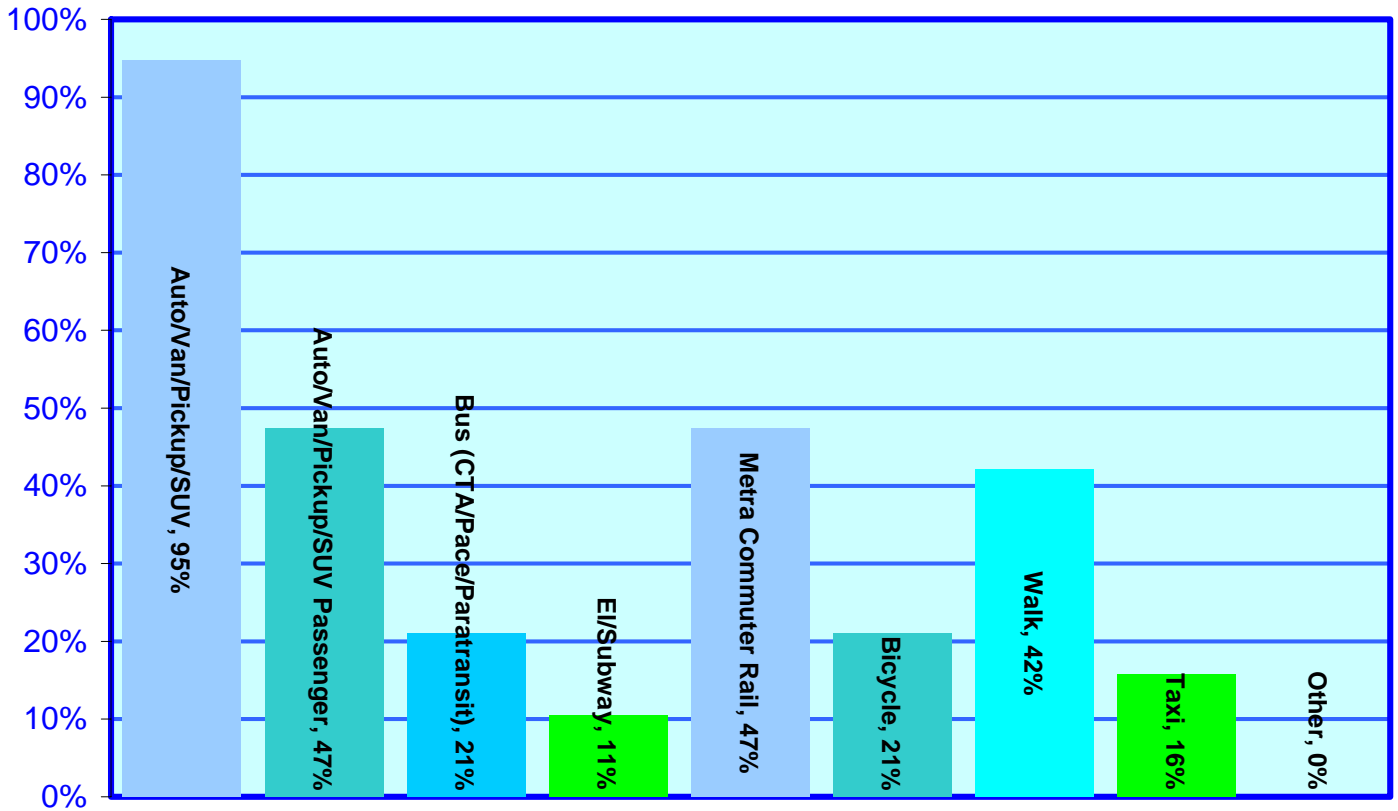
When asked to comment on what could be done to improve the transportation system in northeastern Illinois, the respondents indicated three categories where improvements are needed. These categories are:

- Eliminating rail crossing delays.
- Improving and expanding Metra service and connections between Metra and Pace.
- Widening existing roads and creating new roads where needed to relieve congestion.

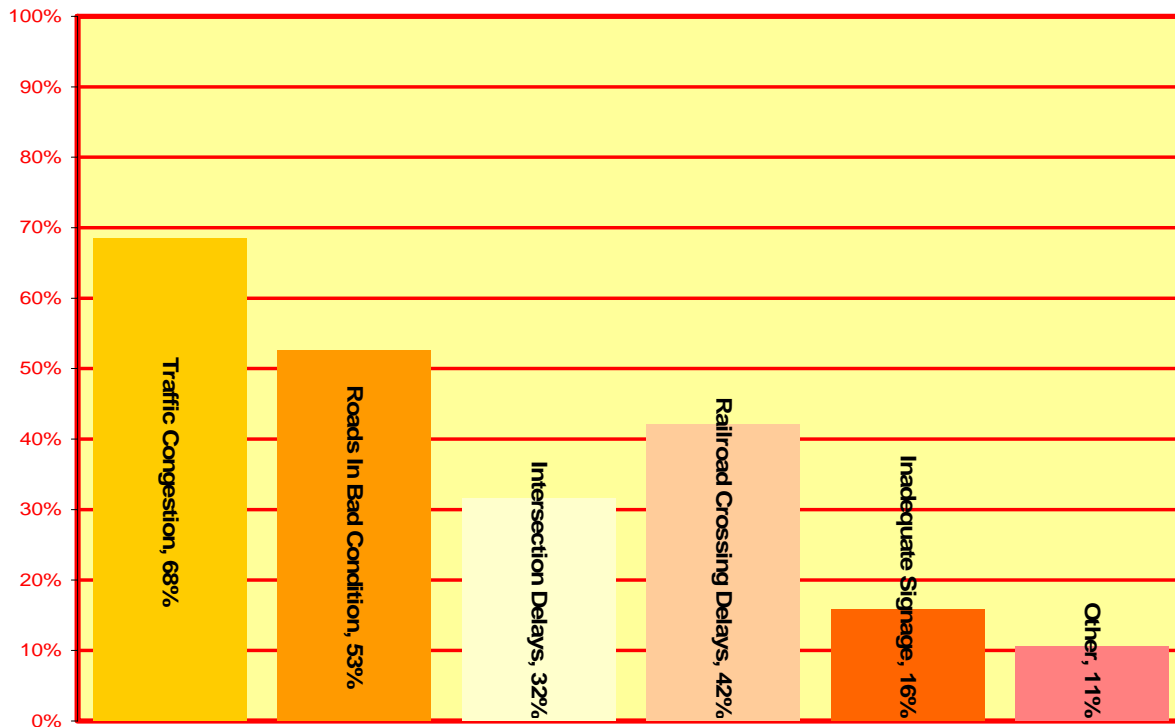
The charts on the following pages give breakdowns on the responses CATS received in Country Club Hills.



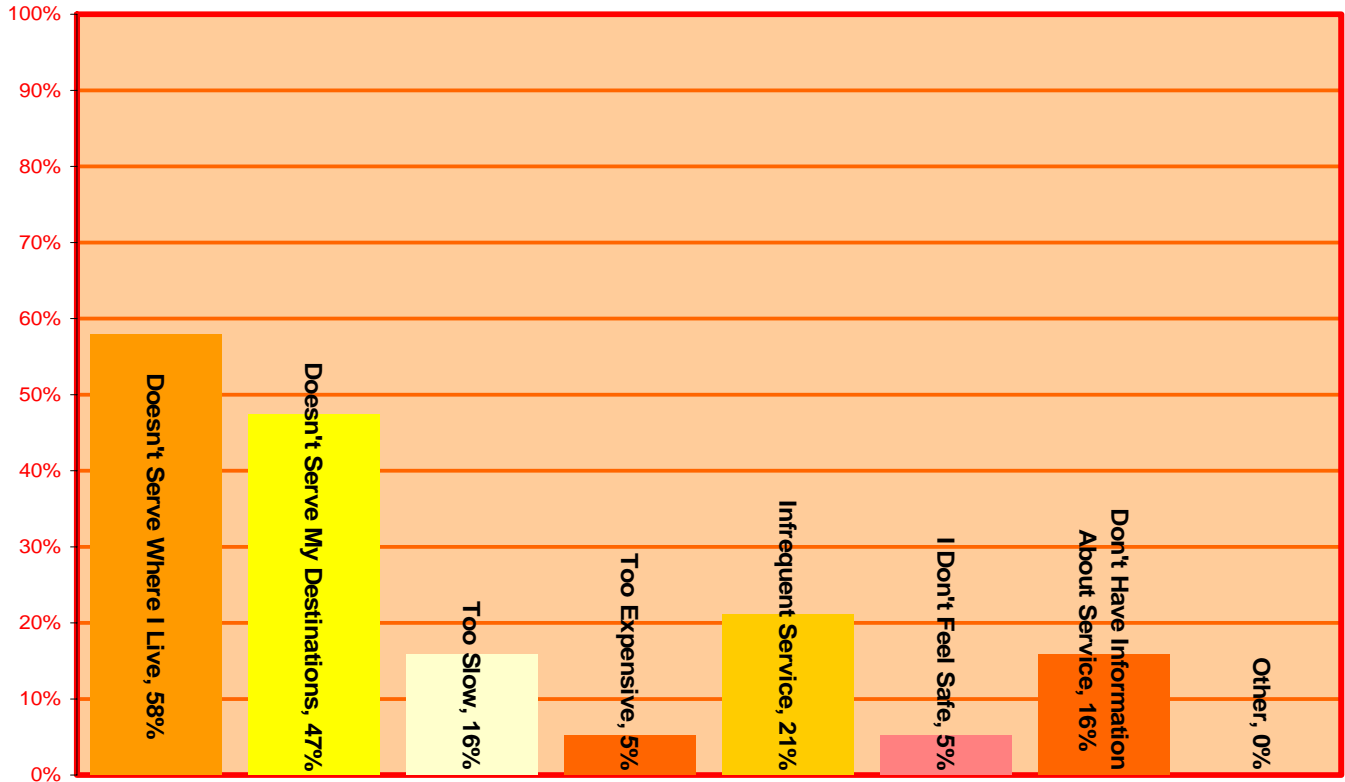
Question: What types of transportation do you typically use?



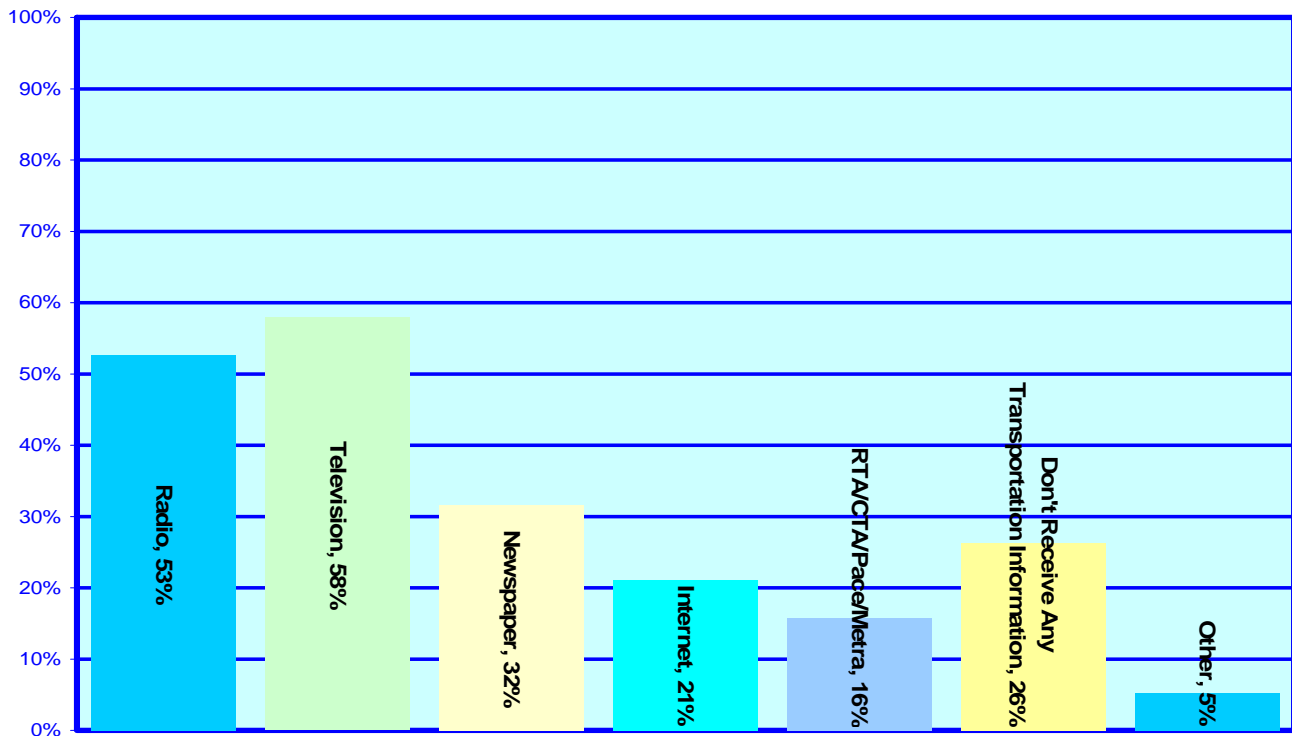
Question: What types of problems have you experienced in your daily travel?



Question: Public transportation problems?



Question: How do you receive transportation information?





Written Responses To Survey Questions

Question 2A: What types of problems have you observed or experienced in your daily travels? Other (please specify):

“Work trains standing too long on street crossings.”

“Metra commuter parking.”

“Link up between Metra and Pace.”

“Intersections where turn signals should be utilized.”

“Traffic congestion at 167th & Crawford.”

“Bike paths do not connect.”

“Dirty trains; Unfinished train station (the Metra station @ Randolph: 10 years under construction and it is not finished).”

“Traffic jams on tollways and highways during rush hours.”

Question 2B: Public transportation related problems. Other (please specify):

“Need Metra line from south suburbs to west and northwest suburbs.”

Question 2C: Problems with other types of transportation

“Metra @ Pace not trying.”

“Not enough bike lanes on existing highways.”

“Need reliable senior and handicap transportation.”

“No washrooms on north/south Metra.”

Question 3: Please tell us what you like about the transportation system in northeastern Illinois. Feel free to comment on all types of transportation.

“Metra system seems very good to commute to the downtown area.”

“The Metra line I use keeps very good time, there are few delays.”

“When I lived in Chicago, I liked to ride the bus and the El. When I worked in downtown Chicago, I liked riding the Metra and now I ride the Metra occasionally.”

“Frequent service to downtown Chicago.”

“Metra: Always on time, clean environment. Need washrooms, need access area for bicycles. If west leg to Joilet can have washrooms, north/south train should be able to adopt.”

Question16: In your opinion, what can be done to improve the transportation system in northeastern Illinois? (Please consider improvements to all types of transportation.)

“Parking for Metra lines.”

“To inform the public in this region about transportation that is available. Also, support road expansion projects as well as road repairs.”

“Fund a Metra line from south to west and northwest suburbs.”

“More frequent Pace service and better Metra facilities on the electric line.”

“More lanes on interstates.”

“Outer belt highway system for traffic to flow around Chicago area and connect to Wisconsin and Indiana.”

“Lots. More transportation, and more inter city (community).”

“Widen Crawford Ave., extend Metra trains farther south, more commuter bus transportation in Country Club Hills to Metra trains.”

“Put trains above ground or overpasses for crossings that are located in residential and congested areas. Use trains that have fewer cars, which will reduce crossing blockage when dropping off cars.”

