

## Key to reading the Work Program Committee TIP Change Attachment

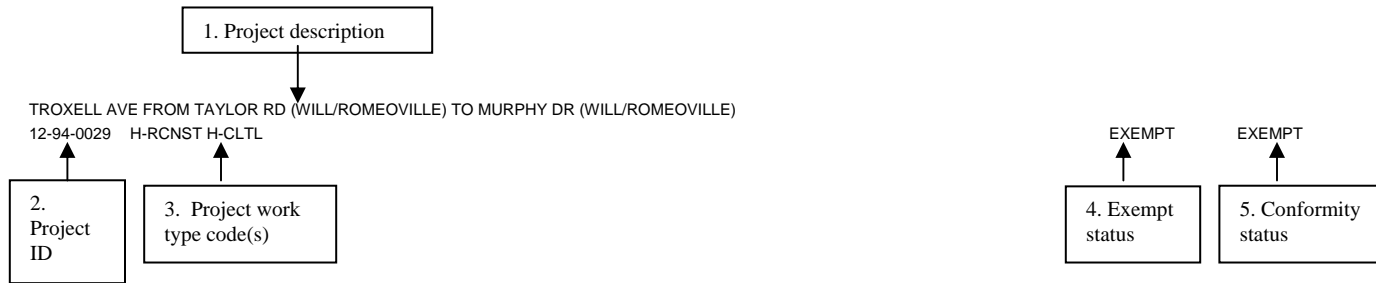
Projects are sorted first by location then by the requesting agency.

There are five possible “Project Actions”: line item, change project, delete project, movetoaward and new project. An example of a line item project action appears below. Examples of the remaining four project actions appear on pages 4 and 5.

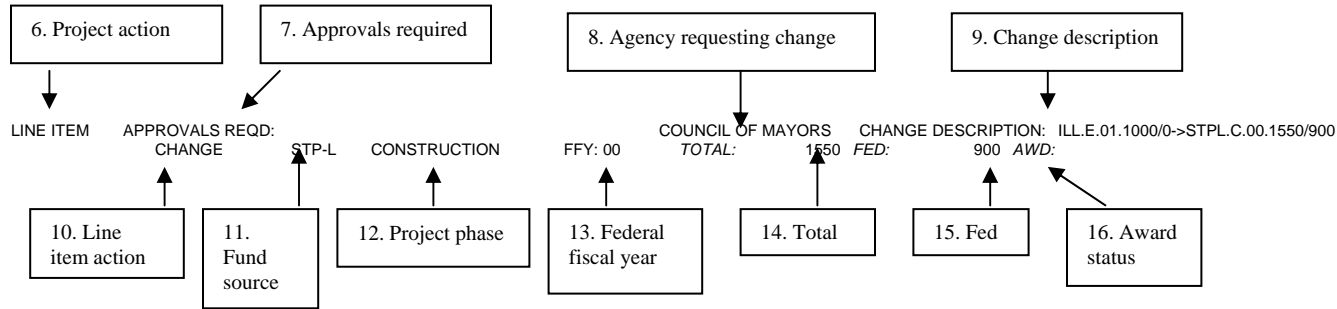
### Example of LINE ITEM project action

TROXELL AVE FROM TAYLOR RD (WILL/ROMEOVILLE) TO MURPHY DR (WILL/ROMEOVILLE)  
 12-94-0029 H-RCNST H-CLTL COUNCIL OF MAYORS CHANGE DESCRIPTION: ILL.E.01.1000/0->STPL.C.00.1550/900 EXEMPT EXEMPT  
 LINE ITEM APPROVALS REQD: STP-L CONSTRUCTION FFY: 00 TOTAL: 1550 FED: 900 AWD: 900  
 CHANGE

### Detail of the first two lines of the project action



### Detail of the third and fourth lines of the project action



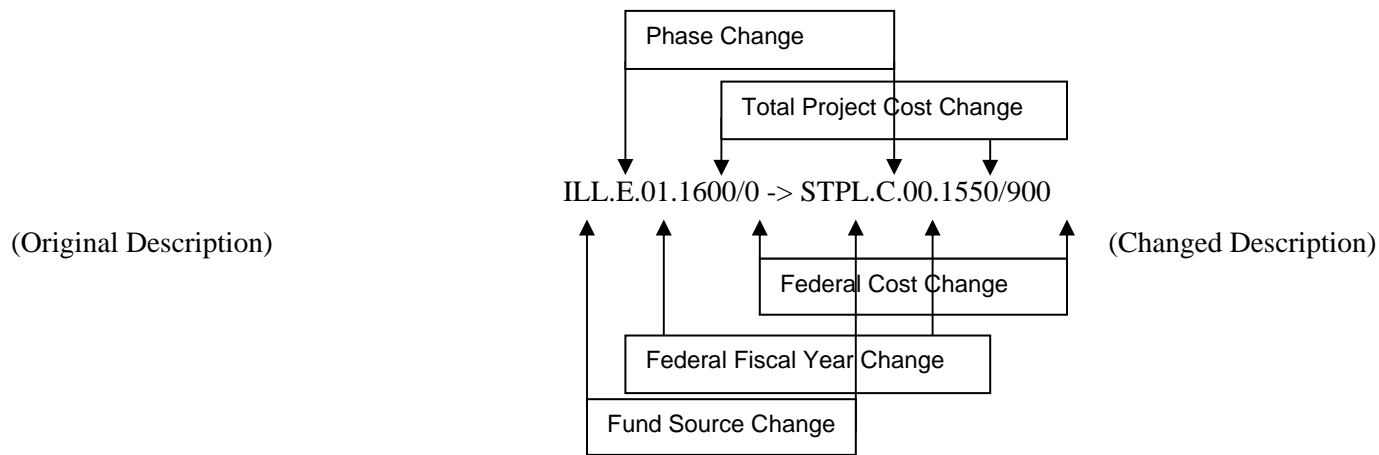
1. **PROJECT DESCRIPTION:** defines the geographic location of the project.
2. **PROJECT ID:** a unique number that is assigned to each project. The project ID is based on the Regional Council or Service Board (the first two digits), the year the project was entered into the TIP (the third and fourth digits), and the sequential project number (the fifth, sixth, seventh and eighth digits). See page 6 for a listing of Regional Council and Service Board codes.
3. **PROJECT WORK TYPE CODE(S):** the code(s) that describes all work being completed under this project ID. See pages 8 and 9 for a list of work type code abbreviations.
4. **EXEMPT STATUS:** indicates whether a project is included in regional emissions analyses. A project is either:
  - Exempt: a project that is not required to undergo conformity analysis as defined by the Clean Air Act Amendments of 1990 (CAAA90).
  - Exempt Tested: a project that although exempt as defined by the CAAA90 may be included in the CATS networks.
  - Non-exempt: a project that is required to undergo conformity analysis as defined by the CAAA90.
5. **CONFORMITY STATUS:** indicates whether a project has been included in the most recent conformity analyses. Phase I Engineering or Alternative Analyses for non-exempt projects may begin prior to the project being included in the conformity analysis, but cannot proceed to design approval.
6. **PROJECT ACTION:** describes the type of change requested. The possible actions to be taken for a project are:
  - CHANGE PROJECT:** indicates a change of location or scope of a project currently in the TIP.
  - DELETE PROJECT:** indicates that the entire project in question is being deleted from the TIP.
  - LINE ITEM:** indicates a change in the phase, financial status or award of one or more lines of a project. A change in financial status may include changes in the year of funding, total cost and/or federal cost of the particular line.
  - MOVETOAWARD:** indicates that all line items for a particular project have been awarded and that the project is being moved from the active project files to the inactive project files.
  - NEW PROJECT:** indicates the addition of a new project into the TIP.
7. **APPROVALS REQUIRED:** indicates what, if any, approvals are required for each project. If no approval is required the space will be blank. The approvals that may be necessary are:
  - Policy Committee (PC)
  - Work Program Committee (WPC)
  - Council of Mayors Executive Committee (Exec)
  - Individual subregional council of mayors (COM)

8. AGENCY REQUESTING CHANGE: indicates which agency has requested the change(s) to the identified project.

9. CHANGE DESCRIPTION: an abbreviated description of the proposed change. The syntax used consists of a string of elements separated by periods. The elements appear in the following order: Fund Source.Phase.FFY.TotalProjectCost/FederalProjectCost. The string to the left of the -> symbol indicates how the project was defined prior to the change. The string to the right of the -> symbol indicates the changed project information. In the example cited below, the change being requested is:

**FROM (prior to change—as the project currently appears in the TIP):** fund source is Illinois(ILL),phase is engineering(E),federal fiscal year is 2001(01),total project cost is \$1,600,000(1600)/federal project cost is \$0(0).

**TO (after change is approved):** fund source is Surface Transportation Program urban funds-locally programmed (STPL),phase is construction(C),federal fiscal year is 2000(00),total project cost is \$1,550,000(1550)/federal project cost is \$900,000(900)



10. LINE ITEM ACTION: indicates any action that has been requested where the project action is “LINE ITEM”. The information for new and changed line items reflects the item status after the change is approved. The information for deleted line items reflects the current information in the line to be deleted.

11. FUND SOURCE: funding for the line item, see page 7 for fund source codes.

12. PROJECT PHASE: the stage of the project covered by the line item, see page 6 for project phase codes.

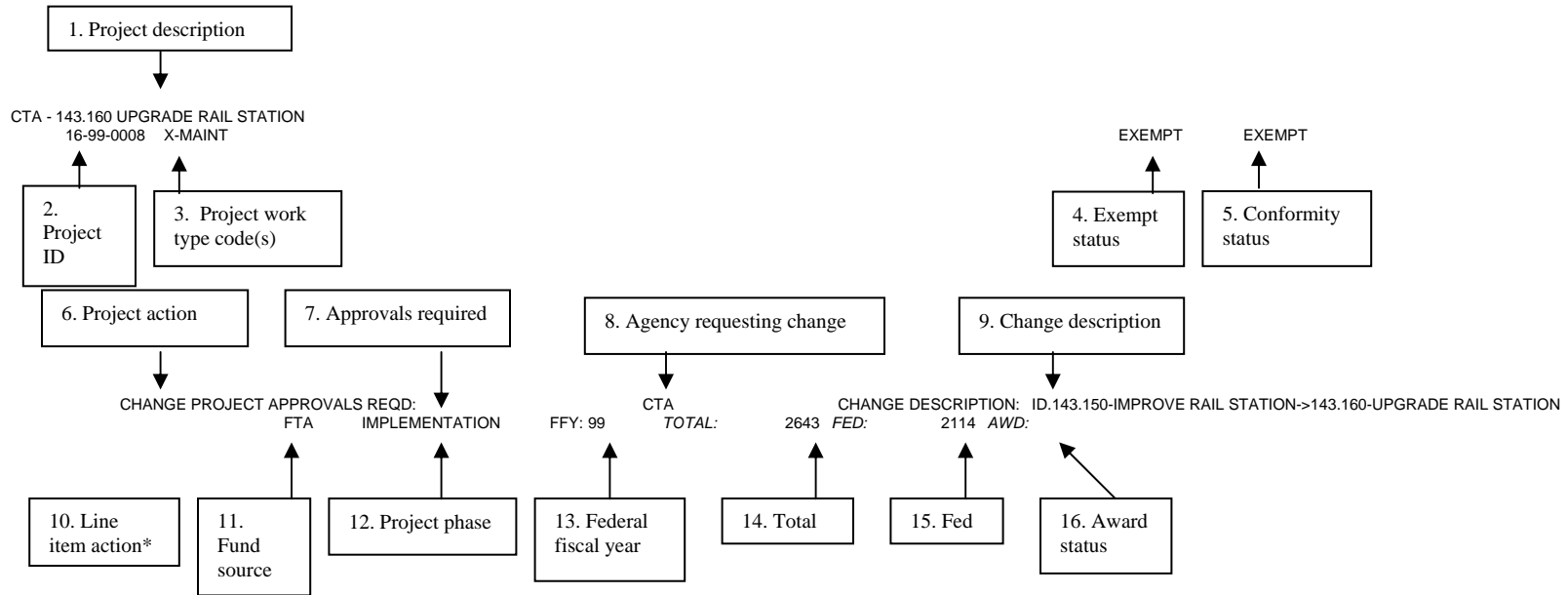
13. FEDERAL FISCAL YEAR: the federal fiscal year in which the line item is to be funded, see page 6 for federal fiscal year codes.

14. TOTAL: the total project cost for the line item. All costs are in thousands.

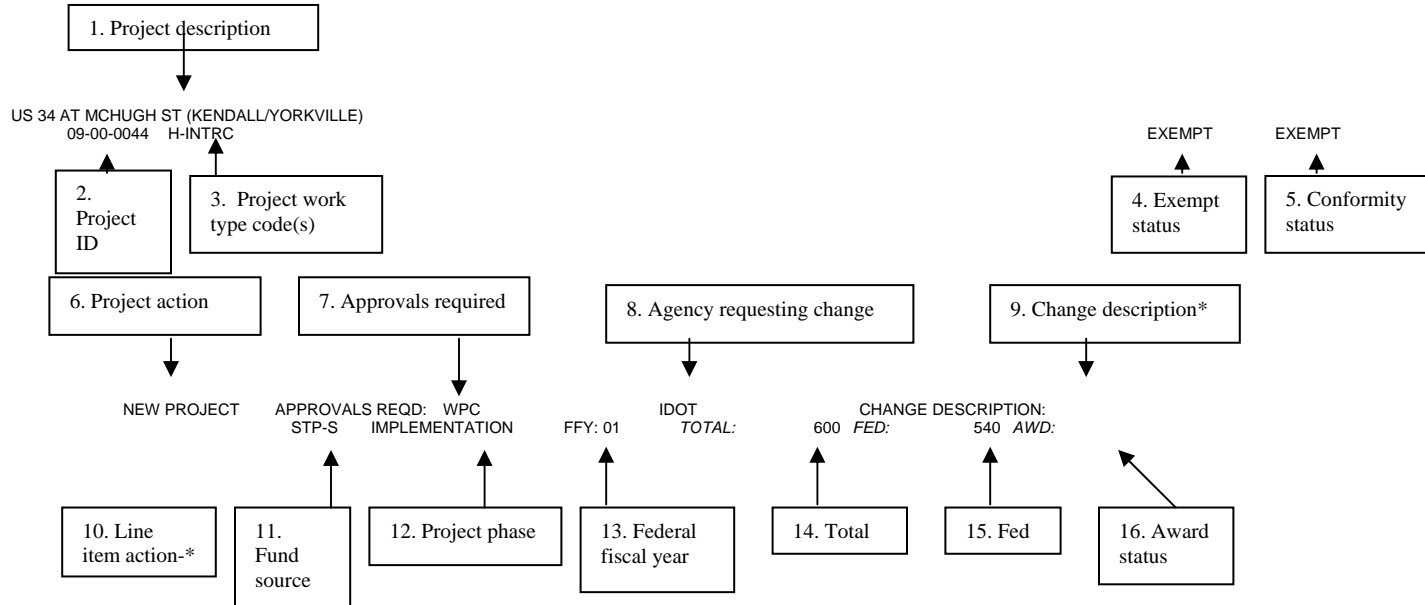
15. FED: the federal cost for the line item. All costs are in thousands.

16. AWARD STATUS: the award status of the line item. If "A" appears, the line item has been awarded

Example of CHANGE PROJECT action

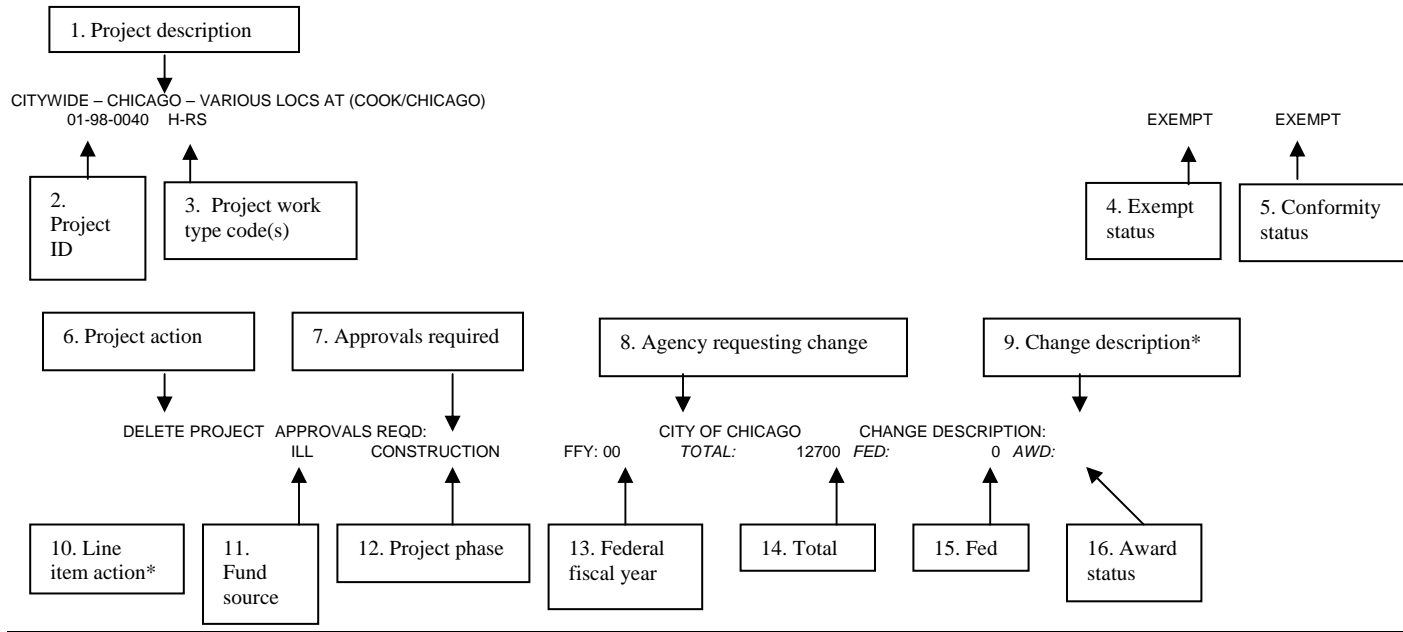


Example of NEW PROJECT action

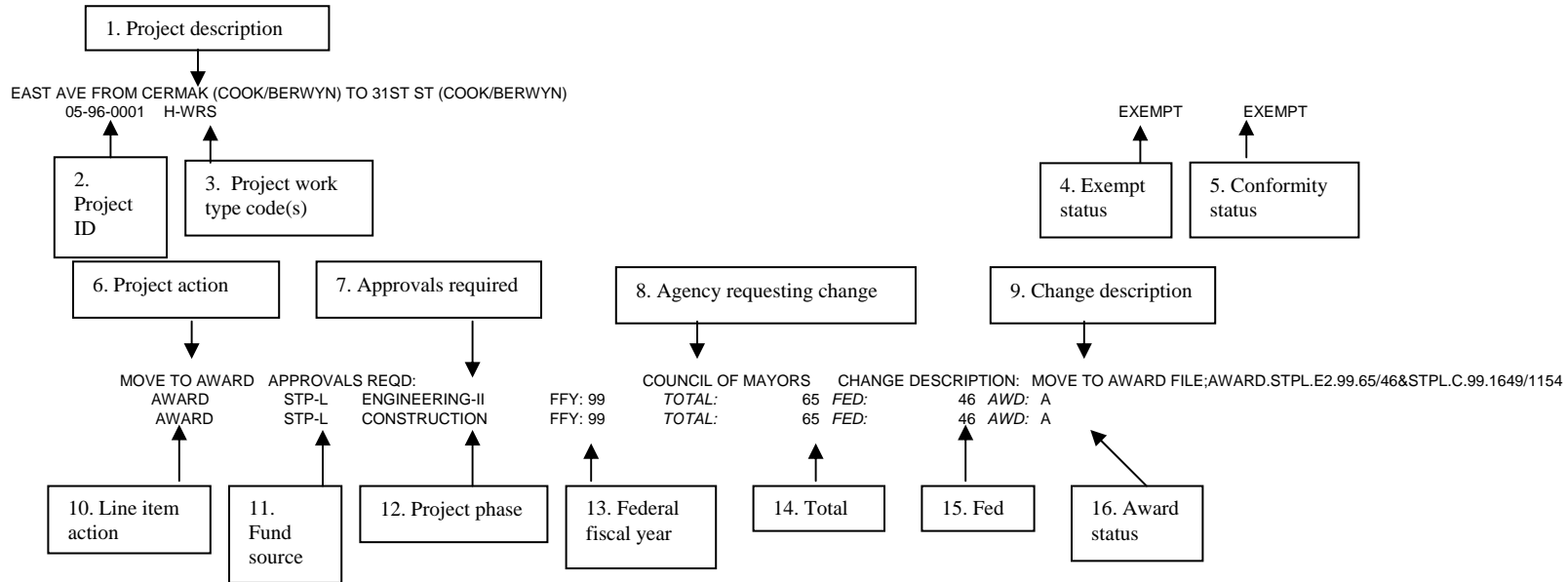


\* No change description or line item action. See 9 and 10 in detailed description on page 3.

Example of DELETE PROJECT action



Example of MOVE TO AWARD project action



\* No change description or line item action. See 9 and 10 in detailed description on page 3.

## REGIONAL COUNCIL/SERVICE BOARD NUMBER AND FUNDING PHASES

Projects are identified by RTA service board or regional council. The service boards and regional councils are assigned numeric codes that serve as the first two digits of each project ID.

01	City of Chicago
02	North Shore
03	Northwest
04	North Central
05	Central
06	Southwest
07	South
08	DuPage
09	Kane
10	Lake
11	McHenry
12	Will
13	Regionwide
15	Chicago FTA
16	CTA
17	Pace
18	Metra
19	FTA/E-H

### PHASES

All projects have phases listed for each funding source and year. Phases are:

Alternative Analysis (Major Investment Study)  
Engineering I  
Engineering II  
Engineering (may include phase I and phase II work)  
ROW Acquisition  
Construction (includes construction engineering)  
Implementation (may include several phases, e.g., ROW and Engineering)

### **FISCAL YEARS CODES:**

*federal fiscal years*

00: October 1, 1999-September 30, 2000  
01: October 1, 2000-September 30, 2001  
02: October 1, 2001-September 30, 2002  
03: October 1, 2002-September 30, 2003  
04: October 1, 2003-September 30, 2004

**MYB: Multi-year B ("B LIST" NOT INCLUDED IN PROGRAM)**

MYB projects are listed for information only and are not part of the fiscally constrained, conformed TIP

## **FUND SOURCE CODES:**

### **FEDERAL FUND SOURCES:**

ATW: Access to Work  
BRD: Bridge Discretionary Program  
BRR: Highway/Bridge Replacement/ Rehabilitation Program  
CMAQ: Congestion Mitigation/Air Quality  
DEM: Sections 1104, 1106b, 1107, and 149 Demonstration Funds  
EDA: Economic Development Administration FNS: FTA New Start  
FTA: FTA Urban Formula and/or Fixed Guideway  
FTA/BUS: FTA Bus Discretionary  
FTA/E-H: FTA Elderly/Handicapped  
FTA-LIV: FTA Livable Communities  
HPP: High Priority Program  
GCM: Gary-Chicago-Milwaukee ITS Corridor  
I-D: Interstate Discretionary Funding  
I-M: Interstate Maintenance  
IST: Interstate Transfer/Transit  
NHS: National Highway System  
STP-C Surface Transportation Program (STP) County Programmed  
STP-E: STP: Enhancement Funds  
STP-L: STP: Urban Funds - Locally Programmed  
STP-R: STP: Rural Funds  
STP-S: STP: Safety Funds  
STP-U: STP: Urban Funds - State Programmed  
TCSR: Transportation and Community and System Preservation

### **STATE OF ILLINOIS FUND SOURCES:**

ICC: Illinois Commerce Commission  
ILL: State of Illinois, Including the Following:  
    State-programmed Motor Fuel Taxes  
    Vehicle Registration Fees  
    General Revenue Funds  
    Illinois Bonds  
    Operation GreenLight Highway Funds  
OGL: Operation GreenLight Transit Funds  
TOLL: Illinois State Toll Highway Authority

### **LOCAL AND REGIONAL FUND SOURCES:**

MFT-ALL: Allocated Motor Fuel Taxes  
MFT-LOC: Locally Imposed Motor Fuel Taxes  
GEN-OP: General Revenues  
OTH: Other or Miscellaneous Local Funding (Committed Funds Only for the First Two Years of TIP)  
PRV: Private  
RTA: Regional Transportation Authority (Bonds and Sales Tax Revenues)  
SPEC: Other Special Assessment or Taxing District

Note: See Chapter 2 of the TIP for information on the purpose and development of the programs funded by federal and non-federal funds sources.

## TIP WORK TYPE and TCM CODES

### ADA ACCESS IMPROVEMENTS

D-FAC ADA - Facility Improvements *exempt*  
 D-VEH ADA - Vehicle Improvements *exempt*

### BICYCLE & PEDESTRIAN PROJECTS

E-BIKE (2) Bicycle Projects *exempt*  
 E-PED (2) Pedestrian Projects *exempt*

### BRIDGE PROJECTS

**B-NEW (1) (2) Bridge/Structure – New non-exempt**  
 B-PNT Bridge/Structure – Paint *exempt*  
 B-RECNFG (1) (2) Bridge/Structure - Existing Lanes - Reconfigure or Widen to Standard *exempt tested*  
 B-REPAIR Bridge/Structure - Repair or reconstruct-in-kind *exempt*  
 B-REPLACE (1) (2) Bridge/Structure - Demolish and Rebuild *exempt*

### BUS ROUTE PROJECTS

**T-EXP (1) (2) Bus Routes - Major Expansion non-exempt**  
**T-IMP (1) (2) Bus Routes - Major Service Improvement non-exempt**

### HIGHWAY AND ROAD PROJECTS

**H-AL(1) (2) Roadway - Add Lanes non-exempt**  
 H-ALIGN (2) Roadway Vertical or Horizontal Alignment *exempt*  
 H-C/G Roadway - Curb and Gutter *exempt*  
 H-CLTL (1) (2) Roadway - Continuous Left Turn Lane *exempt tested*  
**H-COR (1) (2) Roadway - Corridor Improvement non-exempt**  
**H-EXT (1) (2) Roadway - Extend Road non-exempt**  
**H-HOV (1) (2) Roadway - High Occupancy Vehicle Lanes non-exempt**  
 H-INFO (2) Roadway - Directional/Informational Signs *exempt*  
 H-INTIMP (2) Roadway - Intersection Improvements *exempt*  
 H-INTRC (2) Roadway - Intersection Reconstruction *exempt*  
 H-IPASS(1)(2) Roadway – I-Pass Electronic Toll Collection *exempt tested*  
 H-IRS Roadway - Intermittent Resurfacing *exempt*  
**H-NEW (1) (2) Roadway - New Road non-exempt**  
 H-PATCH Roadway – Patching *exempt*  
 H-RCNST (1) (2) Roadway - Reconstruct with Change in Lane Width or Lane Use *exempt-tested*  
 H-RCINKND Roadway - Reconstruct with No Change in Lane Use or Lane Width *exempt*  
 H-RS Roadway – Resurface *exempt*  
 H-WRS (1) (2) Roadway - Widen Existing Lanes and Resurface *exempt tested*

### INTERCHANGE PROJECTS

**I-EXP (1) (2) Interchange - Expand (New Movements Added) non-exempt**  
**I-NEW (1) (2) Interchange – New non-exempt**  
 I-RCNST (2) Interchange - Reconstruction - No New Movements *exempt*

### MISCELLANEOUS PROJECTS

E-HIS Historic Preservation *exempt*  
 E-LS Landscaping *exempt*  
 E\_NOIS Noise Attenuation *exempt*  
**Z-OTH (1) Miscellaneous Non-exempt Projects non-exempt**

Z-OTHEX Miscellaneous Exempt Projects *exempt*  
 Z-OTHXTST (1) Miscellaneous Exempt Tested Projects *exempt tested*

### MULTI-MODAL TRANSPORTATION CENTER PROJECT

M-IMP (1) (2) Multi-modal Cntr - Improve -Change in Service *exempt tested*  
 M-MAINT (2) Multi-modal Center - Maintain, Rehab, Replace *exempt*  
 M-NEW (1) (2) Multi-modal Center – New *exempt tested*  
 M-RELOC (1) (2) Multi-modal Center – Relocate *exempt tested*

### PARKING/PARK & RIDE PROJECTS

P-EXP (1) (2) Parking - Expand Number of Spaces *exempt tested*  
 P-MAINT (2) Parking - Maintain, Rehabilitate, Replace (no change in customer service) *exempt*  
 P-NEW (1) (2) Parking - New Lot or Garage *exempt tested*  
 P-RELOC (1) (2) Parking – Relocate *exempt tested*

### RAIL LINE (COMMUTER/RAPID TRANSIT) PROJECTS:

**R-EXP (1) (2) Rail Line – Extend non-exempt**  
 R-IMP (1) (2) Rail Line - Improve - Change in Service *exempt tested*  
 R-MAINT (2) Rail Line - Maintain, Rehabilitate, Replace (no change in customer service) *exempt*  
**R-NEW (1) (2) Rail Line – New non-exempt**

### ROLLING STOCK PROJECTS

**J-EXP (1) (2) Rolling Stock - Expand Fleet non-exempt**  
 J-REHAB (2) Rolling Stock - Rehabilitate Vehicles *exempt*  
 J-REP (1) (2) Rolling Stock - Replace Existing Vehicles *exempt tested*

### SAFETY PROJECTS

A-BAR Safety – Barriers *exempt*  
 A-BEA Safety – Beacons *exempt*  
 A-FNC Safety – Fencing *exempt*  
 A-GRD Safety – Guardrails *exempt*  
 A-LTS Safety – Lights *exempt*  
 A-MED Safety - Median Projects *exempt*  
 A-OPT Safety - Opticom Equipment *exempt*  
 A-PMRK Safety - Pavement Marking *exempt*  
 A-RRXING (2) Safety - Railroad Crossing Improvements *exempt*  
 A-SHDR Safety - Shoulder Improvements *exempt*  
 A-SKIDT Safety - Skid Treatment *exempt*

### SIGNAL PROJECTS

S-ASNG (2) Add Signals at Single Intersection *exempt*  
 S-MOD (2) Signal Modernization *exempt*  
**S-NEW (1) (2) Add Signals at Multiple Intersections non-exempt**  
**S-TIM (1) (2) Signal Interconnects and Timing non-exempt**

### STATION PROJECTS

C-IMP (1) (2) Rail Stations - Improve with Change in Service *exempt tested*  
 C-MAINT (2) Rail Stations - Maintain, Rehabilitate, Replace *exempt*  
**C-NEW (1) (2) Rail Station – New non-exempt**  
 C-RELOC (1) (2) Rail Station – Relocate *exempt tested*

TRANSFER FACILITY PROJECTS (Single Mode)

X-IMP (1) (2)	Transfer Facility - Improve - Change in Service <i>exempt tested</i>
X-MAINT (2)	Transfer Facility - Maintain, Rehabilitate, Replace (Single Mode Facility) <i>exempt</i>
X-NEW (1) (2)	Transfer Facility – New <i>exempt tested</i>
X-RELOC (1) (2)	Transfer Facility – Relocate <i>exempt tested</i>

TRANSIT COMMUNICATIONS, POWER, AND SIGNALS

U-COM (2)	Transit Communications <i>exempt</i>
U-POW	Transit Power <i>exempt</i>
U-SIGS (2)	Transit Signals <i>exempt</i>

TRANSIT OPERATIONS, CONTINGENCIES, AND ADMINISTRATION:

O-C&A	Contingency and Administration <i>exempt</i>
O-OPS (2)	Transit Operating Assistance <i>exempt</i>

TRANSIT SUPPORT FACILITY AND EQUIPMENT IMPROVEMENTS

F-OFC	Facility - Office Facilities and Equipment <i>exempt</i>
F-REV (2)	Facility - Revenue Collection Equipment <i>exempt</i>
F-SHOP	Facility - Shop Facilities and Equipment <i>exempt</i>
F-SPTV (2)	Facility - Signal Priority for Transit <i>exempt</i>
F-TRN (2)	Facility - Bus Turnaround <i>exempt</i>
F-YRDS (2)	Facility - Yards and Towers <i>exempt</i>

TRANSIT VEHICLE FACILITY PROJECTS

V-MAINT	Vehicle Facility – Maintenance <i>exempt</i>
V-STOR	Vehicle Facility – Storage <i>exempt</i>

- (1) Modeled work types
- (2) TCM candidate work types

*Non-exempt* projects are required to be included in the conformity analysis by federal regulations. Only phase I engineering for non-exempt projects can be added to the TIP between conformity cycles.

Non-exempt projects are shown above in **bold type face**.

*Exempt tested* projects are included in the conformity analysis, but such inclusion is not mandated by federal regulation. Therefore, exempt-tested projects may be added to the TIP between conformity cycles.

*Exempt* projects are not included in the conformity analysis and exempt projects may be added to the TIP between conformity cycles.